

# Quick-fix Mechanical wall ties

## Description

Quick-fix is a double mechanical wall tie having a neoprene expansion sleeve at each end and a drip ring in the middle. The corrosion resistant tie bar is manufactured from Austenitic 304 grade Stainless Steel.

Each neoprene sleeve is sequentially compressed between collars to force a radial expansion by which the tie grips the walls of pre-formed holes in masonry.

- Water stop drip ring
- Durable neoprene sleeves

## Benefits

The uniform radial expansion along the full length of the neoprene sleeves avoids point loadings & the exertion of excessive expansive stress to the masonry.

Being remarkably tolerant to both hole and host material variations these ties are suitable for all normal situations save for in perforated bricks or in communal areas of flats which require certified fire resistance ratings.

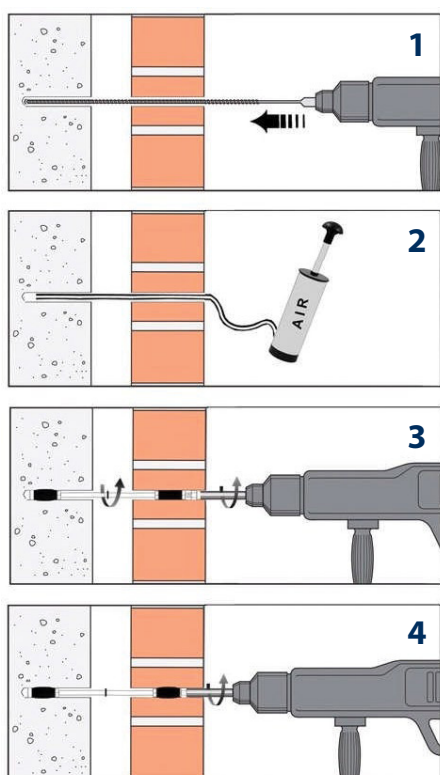
- Avoids point loadings
- Robust & corrosion free

## Distinction

The 'Quick-Fix' wall tie features a unique part-threaded 'tall-nut' that enables sequential anchoring within each leaf.

When turned, the tall nut' rotates the whole tie bar, forcing the neoprene sleeve to expand and grip in the inner leaf. At a factory set torque level, the tie bar taps a thread in the 'tall nut' enabling it to travel down the tie bar to expand the neoprene sleeve to grip the outer leaf.

- Rapid cost effective installation
- Stable, reliable & unobtrusive



View product videos on our website.

## Method statement

1. Set depth gauge on drill and bore 11mm hole through the near brick leaf and 55-75mm into far leaf material.
2. Blow all dust from bore using air pump or air-line. Alternatively clean holes with 'pipe-cleaner' type wire brush.
3. Insert Quick-Fix tie into drill hole. Using setting tool in a torque controlled electric drill/screwdriver wind the tie bar clockwise to expand remote neoprene sleeve and set inner leaf anchorage.
4. Continue winding the tie until the tall nut is forced down the tie bar to expand near-most neoprene sleeve and set outer leaf anchorage. Plug hole to match façade.



## Product specification

**Product:** Quick-Fix 11mm Ø Tie  
**Lengths (mm):** 175, 200, 225 & 230mm  
**Material:** Austenitic Stainless steel - (304)

### CHARACTERISTIC TENSILE RESISTANCE (3MM DEFLECTION)

MATERIAL	BORE Ø	DEPTH	LOAD
Brick <20N/mm <sup>2</sup>	11mm	65mm	2.5kN
Aircrete <4N/mm <sup>2</sup>	11mm	65mm	1.5kN
Concrete >20N/mm <sup>2</sup>	11mm	65mm	3.5kN

### REMEDIAL WALL TIE SELECTOR

CAVITY WIDTH	TIE LENGTH
4-45mm	175mm
25-65mm	200mm
50-90mm	225mm
75-115mm	250mm

**Twistfix Ltd**  
6th Floor, 8 Exchange Quay, Manchester M5 3EJ  
Southern Office: 81 Oxford St, London W1D 2EU  
[www.twistfix.co.uk](http://www.twistfix.co.uk)

© Twistfix Ltd 2011 Doc QFM v 0801

technical helpline

**0845 123 6006**

sales line

**0845 123 6007**