

# Baseline 8 Cavity drain membrane

## Description

Baseline 8 is a high density polyethylene cavity drain membrane which allows the isolation of wet walls and floors above and below ground. Its unique fixing system enables fixtures to be mounted without puncturing the membrane

Large 8mm studs provide excellent drainage and ventilation capacity, making Baseline 8 the choice of professionals for conversion of particularly wet basements and cellars.

- Internal wall lining with drainage
- For walls above & below ground
- For floors above & below ground

## Benefits

Baseline 8 can provide a dry, warm and habitable living space in cellars, basements and other areas suffering chronic damp conditions.

Baseline 8 can be dry-lined by fixing timber battens to the wall via the pre-drilled screw thread aperture in the Brick Plugs.

After the dry-wall surface has dried, it can be painted or papered without any delay.

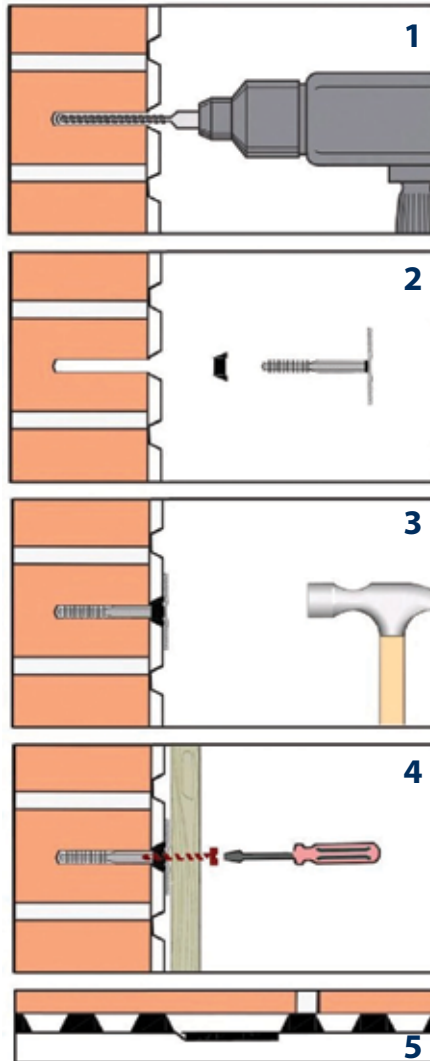
- Ideal for battened dry-wall systems
- High durability and water resistance
- Low and high temperature stability

## Distinction

Baseline 8 is suitable for use in accordance with BS8102:1990. It provides a Type 'C' drained protection to structures below ground, giving a Grade 3 or 4 dry environment that is suitable for domestic or commercial use.

In basements it is essential that Baseline 8 is used in conjunction with a suitable sump and pump facility (unless passive drainage is available).

A complete range of ancillaries ranging from pumped drainage systems to mechanical ventilation units are available to ensure your basement conversions provides years of trouble-free pleasure.



## Product specification

- Product:** Baseline 8  
**Material:** High density polyethylene  
**Roll size:** 2m x 20m (40m<sup>2</sup>)  
**Sheet thickness:** 500 microns  
**Density:** 0.5 kg/m<sup>2</sup>  
**Load bearing capacity:** 120 kN/m<sup>2</sup>  
**Drainage/ventilation capacity:** 5.3 l/m<sup>2</sup>

**Twistfix Ltd**  
 6th Floor, 8 Exchange Quay, Manchester M5 3EJ  
 Southern Office: 81 Oxford St, London W1D 2EU  
[www.twistfix.co.uk](http://www.twistfix.co.uk)  
 © Twistfix Ltd 2009 Doc BCD v 0902

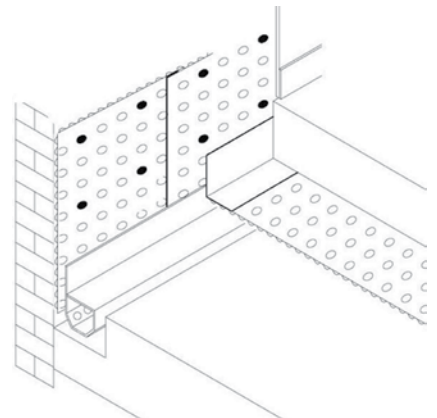
## Prepare surfaces

Replace salt contaminated/friable plaster. Isolate sources of dampness/moisture. Treat moulds/fungi with masonry biocide

## Method statement

Work from the centre of the membrane outwards. Fixings are to be spaced at 600mm centres horizontally and vertically.

1. Drill 10mm diameter bores through 'Baseline 8' cavity drain membrane to a depth of 70mm.
2. Feed 70mm 'Brick Plug' through 'Plug Seal' and offer up to pre-formed bores.
3. Drive the 'Brick Plugs' into bores using a series of light taps to simultaneously fasten the membrane to the wall and provide a waterproof seal at each anchor point.
4. Screw timber battens to the wall via the pre-drilled screw threads in the Brick Plugs and fix plasterboard over battens.
5. Seal seams between sheets with double-sided 'Waterproof Butyl Tape' applied to the non-studded membrane edges. Seal wall/floor junctions with 'Butyl Corner Detail'.



Typical basement conversion detail using Baseline 8 membrane on floors and walls, butyl tape to seal joints and Aqua-Channel for drainage.