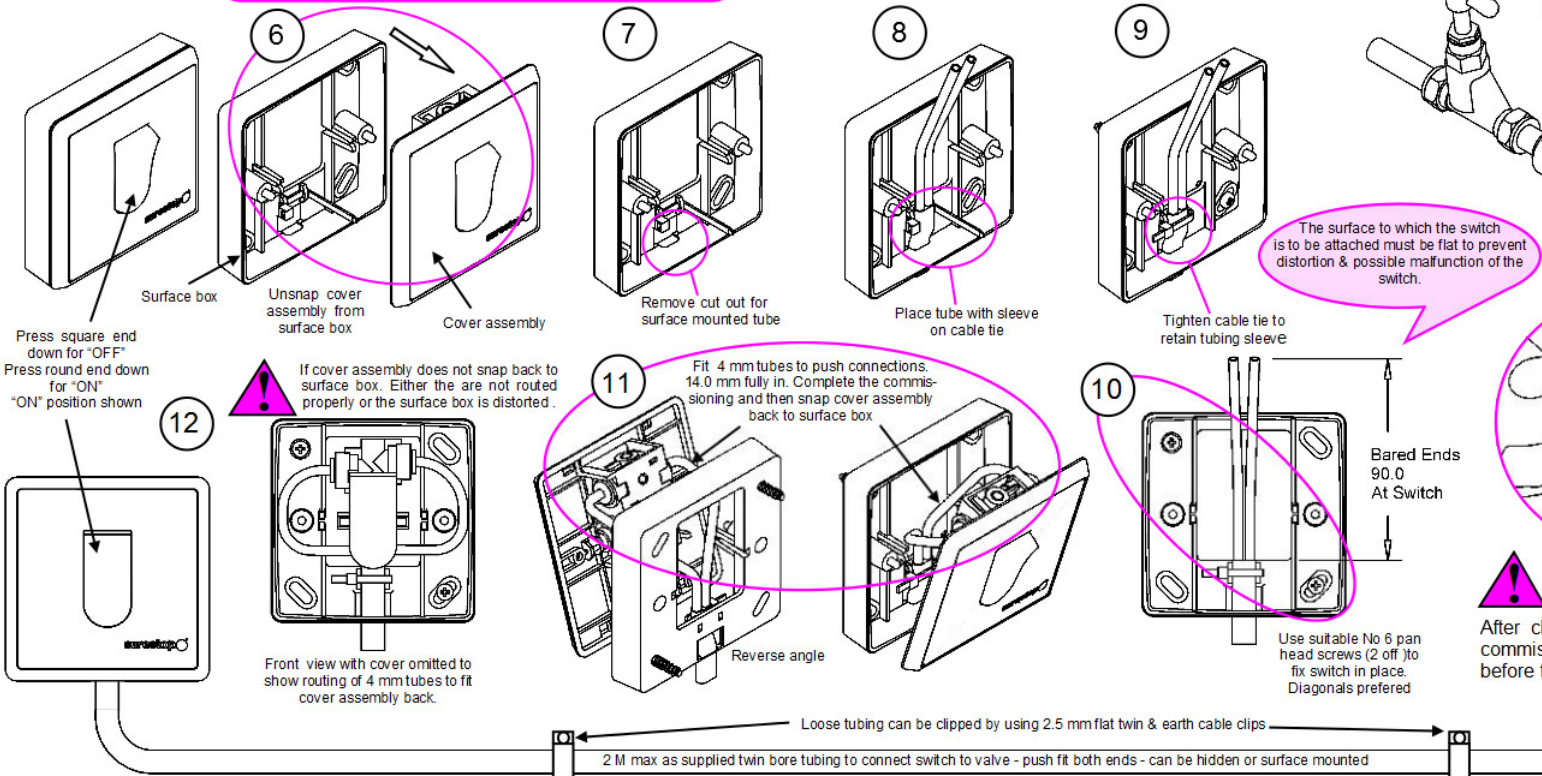


Important Warning!
 Your surestop is manufactured from high grade engineering plastics. Under no circumstances must your surestop come in contact with SOLDER FLUX. If a solder joint is made upstream of your surestop WATER MUST be flushed through before fitting your surestop.

Valve position shown is for illustrative purposes. The valve can be mounted in any orientation



If it is intended to lay the pipe work or tubing into concrete or masonry, conduit pipe with access boxes for the fittings must be used. This is in accordance with Water Regulation

Installation summary for surestop remote water valves - SS/15/REM & SS/22/REM Surface Box Only

Installation of valve body

1. Locate and turn off the water stopcock
2. Remove the section of pipe work. This must be after the stop cock and before any other draw off. Clean the cut ends of pipe etc for length shown. See additional notes items 2 and 3
3. Ensure there is sufficient movement in the pipe work to increase the gap to that shown. It may be necessary to undo other joints to enable this movement.
4. Fit the valve body to the pipe work ends. Lubrication of the pipe work will assist this assembly. Ensure that the arrows match the direction of flow of the water. DO NOT try to force the pipe work into the connections. This will result in damaging the "O" rings.

Installation of remote switch

1. Determine the position of the remote switch and whether the tubing is to be routed on the surface or hidden or a combination of both. The switch can be up to 2 metres from the valve body (the use of extension kit SS/02/EXT will increase this to 4 metres).
2. Remove the cut out in the surface box if the surface route is directly out of the switch. Combined hidden and surface routing the tubing should be routed before fixing the switch in the chosen place.
3. The tubing is to be retained in the switch via the cable tie around the sheathing. The tubes are to be bared to a length of 90.0 mm at the switch.
4. DO NOT shorten the tubing until it has been routed between the switch and the valve.
5. Fix the switch in place using 2 x No 6 pan head or round head screws. The length and type must suit the surface material that you are screwing into.
6. Push the ends of each tube into the 4 mm push fit connections of the switch ensuring that they are fully in (14 mm).
8. It is recommended that the cover assembly is not snapped back in place until the commissioning is completed.
7. At the valve remove the excess tubing. Leave about 200 to 300 mm more than you actually need and bare the tubing to a length of 65.0 mm.
9. Push each of the tubes into the 4 mm push fit connections on the top of the valve ensuring that they are fully in (14.0 mm)

Testing and commissioning

1. Press the rocker on the surestop switch to the "OFF" position (SQUARE END DOWN) and open the nearest outlet of the supply. Turn the stop cock slowly back on, there will be a short burst of water and the surestop should then turn OFF.
2. Press the rocker to the "ON" position (ROUND END DOWN) and water should then flow from the open outlet. Repeated pressing of the rocker between "OFF" and "ON" will turn the water off and on and purge air from the system. The water should turn off within 5 seconds.
3. The surestop should be left at the "ON", (ROUND END DOWN) for normal use of draw offs. At any time press the surestop rocker to "OFF", (SQUARE END DOWN) and when any draw off is opened water will stop flowing within 5 seconds and remain off until the surestop rocker is pressed "ON".
4. After commissioning the cover assembly can be snapped back onto the surface box. Arrange the tubes as shown in the diagrams.

EARTH CONTINUITY

There will be instances where the earth continuity of the property is reliant on the incoming mains water supply pipe work. The installation of the surestop into the pipe work may therefore compromise the earth continuity as the surestop is of all plastic construction. In such circumstances the pipe work should be bonded across the surestop. If there is any doubt, cross bonding should be carried out as a precautionary measure. The means of cross bonding should be in accordance with the current edition of the IEE regulations.

Additional notes and comments on the Installation and operation of your surestop

1. When fitting to an existing mains water supply the existing stop valve will be used. On new supplies a stop cock is to be fitted prior to the surestop unless one is already there.
2. It is essential that the ends of the pipe work - copper or plastic - are completely free from any burr, fraze or sharp edges that are liable to cut damage the "O" ring seals within the joints.
3. When cleaning paint etc from existing pipe work DO NOT remove metal from the outside diameter as this may make the pipe work unable to seal properly on the "O" ring seals.
4. It is expected that after switching the water off with the surestop that the residual water within the system will flow and then drip for a while until it has drained off. The time taken will vary upon the volume of the pipe work and the way it has been run.
5. If there is a leak in the system the nearest draw off point to the surestop should be opened in addition to switching off the surestop. This will ensure that the bulk of the residual water is drained so that the leak can be dealt with properly.
6. Ensure that the surestop is sited where it will not be subjected to freezing. If this is not possible then the surestop and the pipe work must be protected from freezing.
7. When using extension kit SS/02/EXT it is fitted in-between the end of the tubing supplied with the switch and the valve. The ends of the tubing are connected with the valve carrier as supplied. Full instructions are supplied with the extension kit.
8. The surestop switch can be recessed fitted. Instructions for this are available on request.

GUARANTEE

The standard guarantee for your surestop without registration is for 2 years from the date of installation against mechanical and material defects and does not include labour charges. Within this period should your surestop prove to be faulty it will be repaired or replaced free of charge providing it has been installed and used in accordance with the installation and operating instructions. Your surestop is not guaranteed against faults or damage caused by outside sources such as debris in the water supplies or incorrect installation. If it is suspected that the supply will be subject to debris then a suitable in line filter needs to be fitted prior to the surestop. Details of options to extend your guarantee to 15 years are available separately direct from Surestop either by phone, email or web site. This Guarantee does not affect your statutory rights.

Confidential information. Reproduction of all or part of this document without the permission of surestop Limited is forbidden. © 2007

WRAS
APPROVED
PRODUCT

BBA
BRITISH
BOARD OF
AGREEMENT
CERTIFICATE No. 54/Z/136

IMS
ISO 9001
certified
UKAS
QUALITY
MANAGEMENT
518

Part No SS1034/D

sure

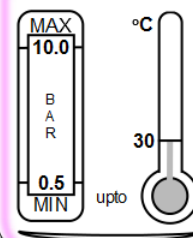
water switch

Powered by water

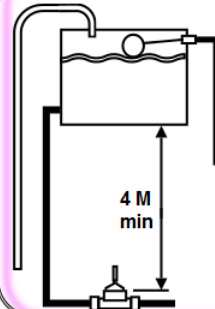
SS/15/REM & SS

Site Requirements

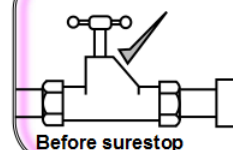
Mains and Pressures



Tank Fed Supplies

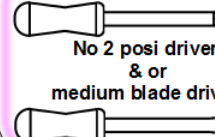


Stop Cock



Before surestop

Minimum Tools



No 2 posi driver
& or
medium blade driver