

Crack Stitching Wall Repair

Description

Helical crack stitching CST are available in various sizes and lengths.

The crack stitching ties are grouted into existing masonry to repair cracks in walls. They increase their flexural strength.

WHO60® is a thixotropic, shrink-compensated grout with polymer additives. The grout sets in and around the helix and rapidly develops compressive strength to restrict axial deflection under load conditions.

Benefits

Retrospectively applied helical bed joint reinforcement enables crack repairs to be made discreetly and with minimum disturbance. The repair restores the structural integrity of masonry and provides resilience against further cracking.

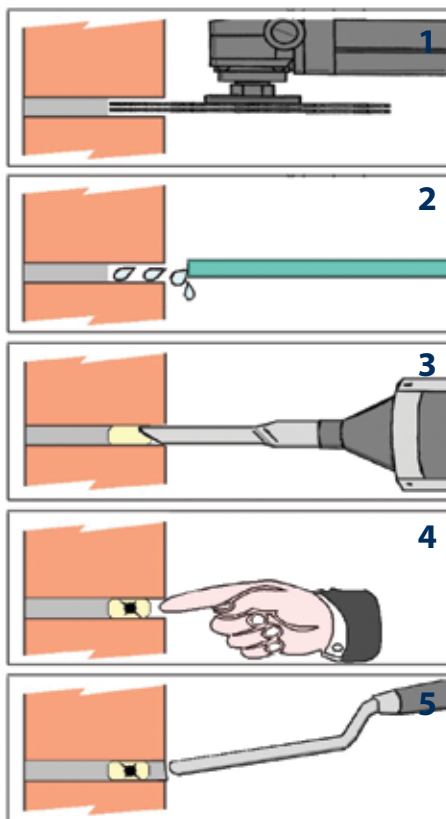
Rendered walls can have crack stitch ties installed directly into masonry units to bind them together and, where shear strength is an issue, permit the use of diagonal reinforcement and/or use of heavy duty rods.

Distinction

The profiled wire is twisted to provide torsional stresses resulting in a helix.

The most consistent and reliable Helical CST is the most consistent and reliable.

The most consistent and reliable Helical CST is the most consistent and reliable.



Method statement

Chase slots at 300mm intervals along length of wall that extends 500mm each side of crack.

Clear loose detritus from slots and flush thoroughly with water,

Pump bead of WHO60® cement grout to rear of slot, filling it evenly to approximately two thirds full.

Make good wall chase to disguise slot. Repair cracks between the helically reinforced masonry with appropriate and discreet filler.

Make good wall chase to disguise slot. Repair cracks between the helically reinforced masonry with appropriate and discreet filler.

Product specification

Reinforcing Bar

Material: Austenitic Stainless steel - (304)

Ultimate Tensile Strength:

= 1050-1200N/mm²

5mm Rod - Nom. CSA = 6 mm²

6mm Rod - Nom. CSA = 8mm²

7mm Rod - Nom. CSA = 10mm²

8mm Rod - Nom. CSA = 13mm²

9mm Rod - Nom. CSA = 16mm²

WHO60® Grout at 28 Days at 20°c

Compressive Strength: = 55N/mm²

Tensile Strength: = 5N/mm²

Flexural Strength: = 12N/mm²

CRACK REPAIR GUIDE

Tolerances = + 5mm / - 0mm

MASONRY	DEPTH OF		
	SLOT	GROUT	ROD
102mm	30mm	20mm	20mm
215mm	45mm	30mm	30mm

Twistfix Ltd
BWF0ETI4RBSFPOEPO818
www.twistfix.co.uk
© Twistfix Ltd 2008 Doc4W