

### RubberCover: Proven performance

The Firestone RubberCover System is based on EPDM roofing membranes that are made of a synthetic rubber compound.

For more than 25 years Firestone EPDM membranes have been installed on commercial and industrial low slope roofs worldwide offering proven field performance. Today the high quality Firestone EPDM membranes are also available for residential roofing applications.

#### A multitude of uses

Firestone RubberCover is an ideal, high performing system for a variety of flat roofing applications around your home:

- House extensions
- Garden sheds
- Verandas
- Dormers
- Garages
- Trailers
- Carports
- Gutters

### Special features and benefits

The Firestone RubberCover System offers a unique combination of features and benefits which have been demonstrated on hundreds of thousands of exposed roofs around the world:

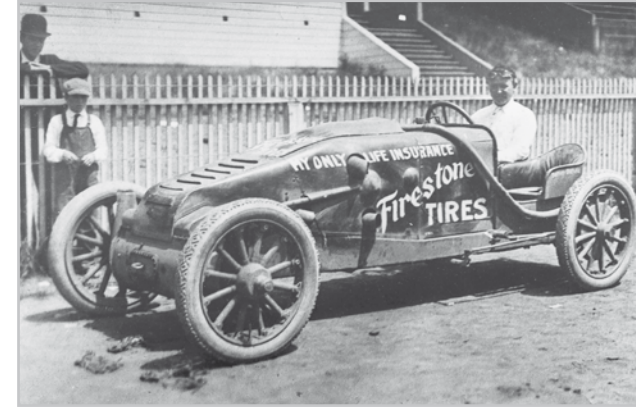
- Large seamless single-ply sheets
- Life expectancy up to 50 years
- Flame free application
- Lightweight
- Easy to install without special tools
- Highly flexible
- Little or no maintenance
- Eco friendly



### Firestone: A world leader in rubber technology

For over a century Firestone has been a trusted name in quality rubber products and technology. Firestone EPDM roofing membranes are manufactured by Firestone Building Products, a division of Bridgestone Firestone Diversified Products, a subsidiary of Bridgestone Americas Holding Inc.

Since 1980, more than 1,000,000,000 m<sup>2</sup> of Firestone EPDM membranes have been successfully installed on roofs worldwide. This performance has positioned the company as a leading manufacturer of EPDM roofing membranes.



### Quality manufacturing

Firestone Building Products operates EPDM plants with state-of-the-art equipment to offer its customers high quality products that perform to last.

The manufacturing plants have achieved ISO 9001 and ISO 14001 certification, which are a testimony of the company's commitment to quality and environmental management systems. Furthermore, Firestone RubberCover membranes have obtained the European CE-marking.



**Firestone**  
BUILDING PRODUCTS  
**NOBODY COVERS YOU BETTER.®**

[www.firestonerubbercover.com](http://www.firestonerubbercover.com)

For further information, please visit our website and/or contact your local Firestone RubberCover dealer:



# Easy to install. No Flame. No Trouble.



- Fully adhered EPDM roofing system
- Long life expectancy
- Large seamless sheets
- Flexible and lightweight



# Before you start

## RubberCover membrane and accessories

### RubberCover membrane

- Panel sizes: - 3.05 m x 7.62 m  
- 4.57 m x 7.62 m  
- 6.10 m x 7.62 m  
Packed on 1.80 m long cores.
- Thickness: 1.0 mm
- Weight: 1.27 kg/m<sup>2</sup>

Note: Special sizes are available upon request.

Firestone has developed a complete range of accessories to facilitate the installation of the RubberCover membrane and to achieve superior system performance on the roof.

### RubberCover Bonding Adhesive

The RubberCover membrane must in each application be fully adhered to the substrate using Bonding Adhesive, a contact adhesive to be applied to both the membrane and the substrate.

Packaging: 10 litre can

Coverage: approx. 1 litre per 2 m<sup>2</sup> (two sides)



### RubberCover QuickPrime Plus (for use with all QuickSeam products)

Used to clean and prime the membrane prior to application of all QuickSeam products.

Packaging: 0.95 litre can

- Coverage:
- 1 can for 20 lm seam or for 15 patches of QuickSeam SA Flashing in size 45 cm x 45 cm
  - 1 can for 4.5 m<sup>2</sup> of gutter surface

### RubberCover pad and handle

Used for applying QuickPrime Plus primer.

Coverage: 2 pads and 1 handle per litre of QuickPrime Plus

### RubberCover QuickSeam Cover Strip

Used to splice adjoining membrane panels on the roof.

Packaging: 1 roll = 7.62 m long x 15 cm wide

### RubberCover QuickSeam Corner Flashing

Used for flashing outside corners and for repairs if needed.

Packaging: 1 piece = 22 cm diameter

### RubberCover QuickSeam Pipe Boot

Used for flashing pipe penetrations from 2.5 cm up to 15 cm in diameter.

Packaging: by the piece, supplied with clamping ring

### RubberCover QuickSeam SA Flashing

Used for sealing drains, skylights, vents, gutters

- Packaging:
- 1 roll = 15.25 m long x 45 cm wide
  - 1 patch = 45 cm x 45 cm

### Hand roller

Used for rolling seams and installation details after application of QuickSeam products.

Packaging: by the piece

# Installation instructions

## Easy and flame free installation

### Adhering the membrane

The RubberCover membrane must always be fully adhered to the substrate.

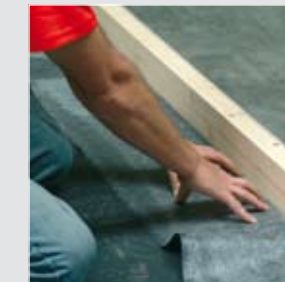
Adhere the RubberCover membrane to the substrate using Bonding Adhesive. Compatible substrates are wood, bitumen, concrete, PUR/PIR insulation, zinc, etc.



Position the membrane on the substrate, let it relax for 30 minutes and then fold back half of the membrane.



Apply Bonding Adhesive to the underside of the folded membrane and to the substrate to be covered.



Let both surfaces dry until adhesive no longer sticks to the finger when touched.



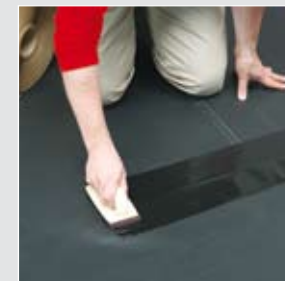
Roll the membrane onto the substrate and sweep with a soft brush. Repeat these steps for the other half of the membrane.

### Seaming

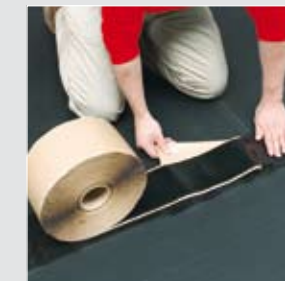
Do not leave space between adjacent membranes (a slight overlap is allowed).



Apply QuickPrime Plus to both sides of the joint to a total width of 20 cm and wait until it is dry to the touch.



Remove a piece of the release paper from the QuickSeam Cover Strip and position it over the seam area treated with QuickPrime Plus.



Pull the release paper at a 45° angle from under the QuickSeam Cover Strip and adhere the strip with a flat hand to the membrane. Make sure no air bubbles are trapped inside.



Roll the strip with a hand roller, rolling at right angles over the seam.

### Inside corners



Adhere the membrane with bonding adhesive to the upstand and on top of the roof edge.



Roll the excess membrane towards the corner and fold it into a pocket.



Fold the membrane flat onto the roof edge. The edge is finished with roof trim (see edge finishing). Excess membrane is trimmed off.

### Outside corners/skylights



Cut the membrane from top to bottom up to the base at the external corner. Adhere the membrane with Bonding Adhesive to the upstand. Apply QuickPrime Plus across 10 cm on both sides and allow to dry.

Adhere a piece of QuickSeam SA Flashing up to the base.

Apply a new layer of QuickPrime Plus.

Remove the release paper from the QuickSeam Corner Flashing and adhere it to the upstand.

Press on with a hand roller.

### Vents/penetrations



Apply QuickPrime Plus to the membrane (min. 10 cm around the vent) and to the flange of the vent. Allow to dry.



Cut a hole in the QuickSeam SA Flashing strip to the size of the vent.



Position the QuickSeam SA Flashing over the vent, remove the release paper and press it into the primer with your hand.



Roll on with a hand roller.

### Rainwater drainpipe (RDP)



Place the RDP, press firmly in the slope angle and screw it tight to the substrate. Apply QuickPrime Plus to the top of the RDP and at least 10 cm around the RDP. Allow to dry.

Adhere QuickSeam SA Flashing over the RDP and onto the membrane. The strip should overlap the edges of the RDP by at least 5 cm in all directions.

Roll on with a hand roller.

Cut an opening in QuickSeam SA Flashing strip to the size of the RDP.

### Edge finishing

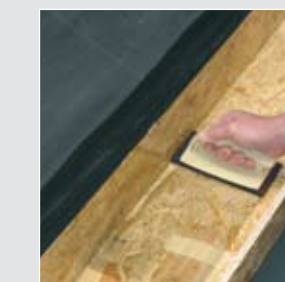


Place the roof trim on the roof edge.



Attach the roof trim using stainless steel screws and neoprene rings.

### Gutter



Apply QuickPrime Plus to the gutter surface.



Adhere the QuickSeam SA Flashing to the gutter. Roll on with a hand roller.